



Sony Ericsson

Component Replacement

- electrical -



Txt pro, CK15i, CK15a

CONTENTS

1	Replaceable Components	3
2	Component Placing.....	6
3	Repair Actions	7
	3.1 Shield Can Fence Modifications	7
	3.2 Additional Repair Info	8
4	Revision History	13

***For general information about electrical repair related issues, refer to
1220-1336: Generic Repair Manual - electrical***



1 Replaceable Components

EXPLANATION OF ABBREVIATIONS USED IN THE COLUMN 'COMMENTS' BELOW

COMPONENT LOCATION

A = Side A

B = Side B

MOISTURE SENSITIVITY LEVEL

MSLX (X = 1, 2, 2A, 3, 4, 5, 5A or 6)

For more information on moisture sensitivity levels:

Refer to 1220-1336: Generic Repair Manual – electrical, section 'Moisture & Baking'!

REPAIR METHOD

HA = Hot Air (removal & mounting)

ST = Soldering Tool (removal & mounting)

HA/ST = Hot Air for removal - Soldering Tool for mounting

BGA = BGA Station

BH = Bottom Heater

ADDITIONAL INFORMATION

⇒1 (2,3,4, etc.) = Proceed to 'Additional Repair Info' for further instructions in the indicated section(s).

CALIBRATION

C = Calibration of the phone is required after replacing the component

Calibration to be done by authorized centers only!



Component Replacement Repair Drawing Electrical/

Position	Component	Part no.	Comments
BAT201	Capacitor 220.0 uF 4.0 V	1205-9750	S MSL3 HA
D401	Diode Protection 5,V SOD882	1211-8286	P HA ⇒1
D402	Diode Protection 5,V SOD882	1211-8286	P HA ⇒2
D601	Diode Protection 5,V SOD882	1211-8286	P HA
D603	Diode Protection 5,V SOD882	1211-8286	P HA
D605	Varistor	A/308-0000-00159	P HA ⇒3
D606	Diode Protection 5,V SOD882	1211-8286	P HA ⇒4
D607	Diode Protection 5,V SOD882	1211-8286	P HA ⇒5
D608	Diode Protection 5,V SOD882	1211-8286	P HA ⇒5
D610	Diode Protection 5,V SOD882	1211-8286	P HA ⇒6
D701	LED White 1.8*1.0*0.3mm	1204-6085	S MSL2 HA/ST
D702	LED White 1.8*1.0*0.3mm	1204-6085	S MSL2 HA/ST
D703	LED White 1.8*1.0*0.3mm	1204-6085	S MSL2 HA/ST
D704	LED White 1.8*1.0*0.3mm	1204-6085	S MSL2 HA/ST
D705	Varistor	A/308-0000-00130	S HA
D707	Varistor	A/308-0000-00130	S HA ⇒7
D708	Varistor	A/308-0000-00130	S HA ⇒7
D710	Varistor	A/308-0000-00130	S HA
D714	Varistor	A/308-0000-00130	S HA
D718	Varistor	A/308-0000-00130	S HA ⇒7
FL401	EMI Filter	A/308-0000-00198	P HA ⇒6
J401	SIM Card Connector	1230-2848	P BGA ⇒8
J402	Battery Connector	1236-1296	P BGA ⇒9
J403	Micro USB Connector	1230-2857	P BGA ⇒10
J404	Card Conn Micro SD	1243-7302	P BGA ⇒11
J501	Camera Socket	1220-0574	P BGA ⇒12
J502	Conn BtB Receptacle 50p AXE550124	1212-6588	S BGA
J605	Vibrator	1218-9713	P BGA ⇒13
J901	RF Connector	1210-6691	P BGA ⇒14
J1001	RF Connector	1210-6691	P BGA ⇒4
L602	Inductor	A/303-0433-86071	P HA
L604	Inductor	A/303-0433-86071	P HA
Q501	Trans N-ch FET SOT416	1204-3154	S HA
Q602	Trans N-ch FET SOT416	1204-3154	P HA ⇒5
Q701	Trans N-ch FET SOT416	1204-3154	S HA
RN501	Chip Resistor Array	A/303-1000-00458	P HA ⇒15
RN502	Chip Resistor Array	A/303-1000-00458	P HA ⇒3
RN503	Chip Resistor Array	A/303-1000-00458	P HA ⇒15
SW701	Side Key Switch	A/315-0000-00047	P HA/ST + BH ⇒16
SW702	Side Key Switch	A/315-0000-00047	P HA/ST + BH ⇒17
SW703	Side Key Switch	A/315-0000-00047	P HA/ST + BH ⇒2
SW704	Side Key Switch	A/315-0000-00047	P HA/ST + BH ⇒18
U202	Transistor	1200-0145	P HA ⇒4
U401	IC Overvoltage protection 5,85V	1234-5393	P MSL3 HA ⇒6
U402	IC Vreg DFN1216	1243-0353	S HA ⇒7
U501	IC 8-pin QFN	1217-4125	S HA ⇒7
U503	IC LGA-16	1241-6962	S MSL3 HA
U504	IC Hall Switch	1229-6837	S HA
U506	EMI Filter	A/308-0000-00046	S HA ⇒7
U507	EMI Filter	A/308-0000-00046	S HA ⇒7
U508	EMI Filter	A/308-0000-00046	S HA ⇒7
U510	IC Vreg DFN 1212-6	1226-5618	P HA ⇒3



Component Replacement Repair Drawing Electrical/

Position	Component	Part no.	Comments
Z901	Conn Leaf Spring 1p	1202-1053	P HA ⇨1
Z902	Conn Leaf Spring 1p	1202-1053	P HA ⇨11
Z903	Conn Leaf Spring 1p	1202-1053	P HA ⇨1

2 Component Placing

To access the Component Placing document, double-click the icon below.
Applicable for on-screen viewing only – icon not shown on hard-copies.





3 Repair Actions

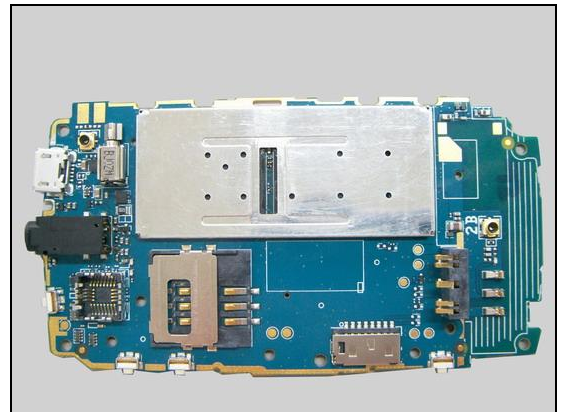
Refer to the Tools Catalogue/Matrix for information about equipment required for PBA repair!

3.1 Shield Can Fence Modifications

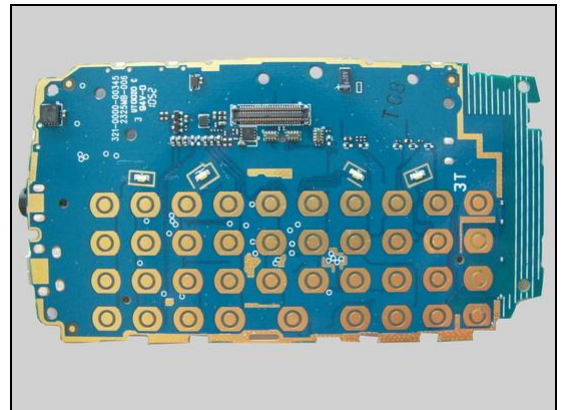
Refer to the pictures below of the primary and secondary sides for didn't repairs that require the Shield Can Fence to be modified:

- after rework the height of the frame should not be affected
- it should not be visible that rework has been carried out when the lid has been mounted

Primary side



Secondary side





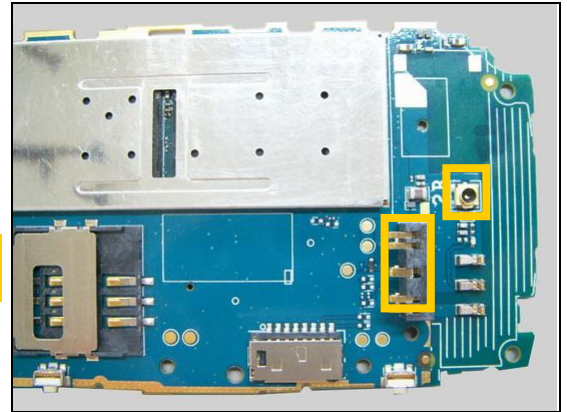
Repair Actions

3.2 Additional Repair Info

1

D401, Z901, Z903

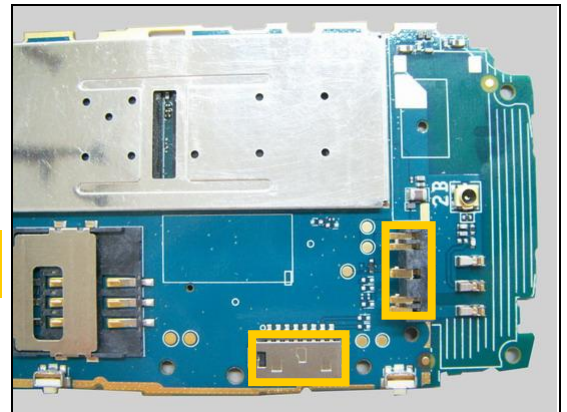
Protect the Battery Connector and RF Connector with capton tape!



2

D402, SW703

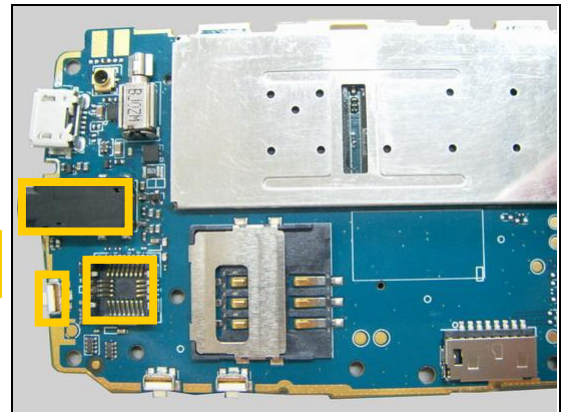
Protect the Battery Connector and Card Conn Micro SD with capton tape!



3

D605, RN502, U510

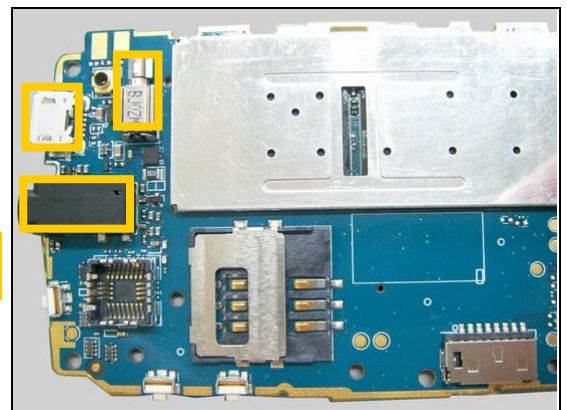
Protect the Conn Audio Jack, Camera Socket and Side Key Switch with capton tape!



4

D606, J1001, U202

Protect the Conn Audio Jack, Micro USB Connector and Vibrator with capton tape!



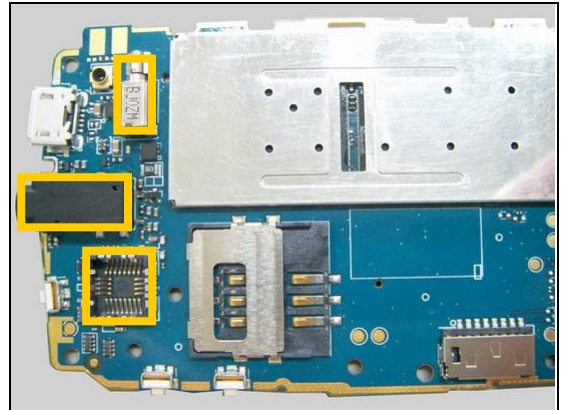


Repair Actions: Additional Repair Info

5

D607, D608, Q602

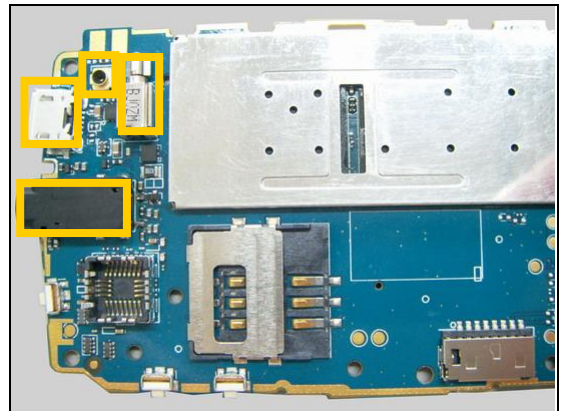
Protect the Conn Audio Jack, Vibrator and Camera Socket with capton tape!



6

D610, FL401, U401

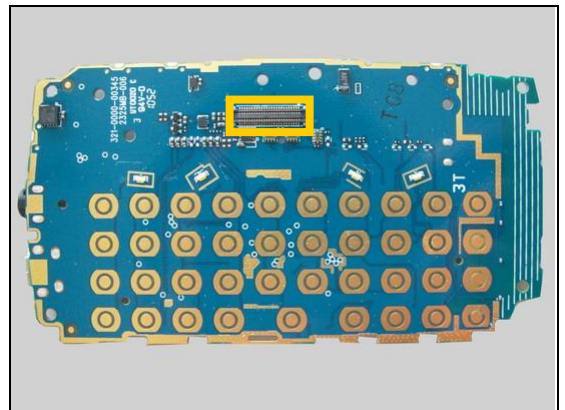
Protect the Conn Audio Jack, Vibrator, RF Connector and Micro USB Connector with capton tape!



7

D707, D708, D718, U402, U501, U506, U507, U508

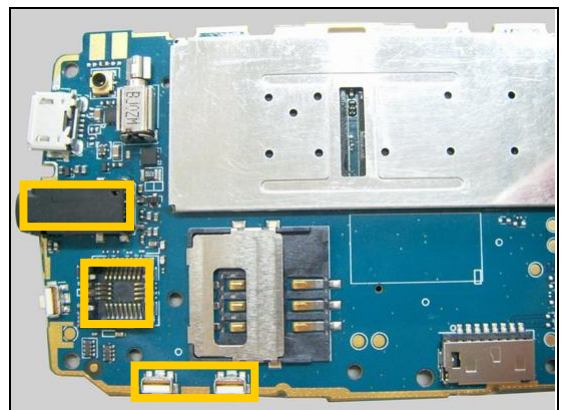
Protect the Conn BtB with capton tape!



8

J401

Protect the Conn Audio Jack, Camera Socket and Side Key Switch with capton tape!



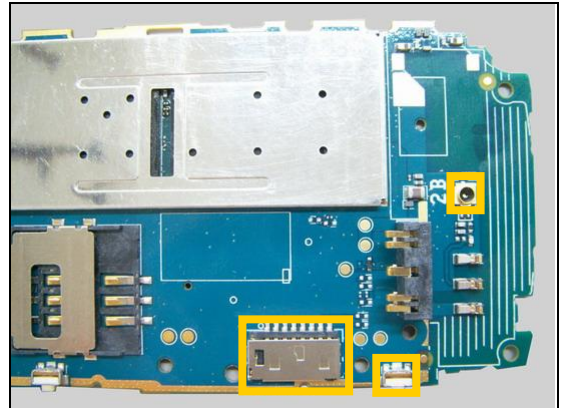


Repair Actions: Additional Repair Info

9

J402

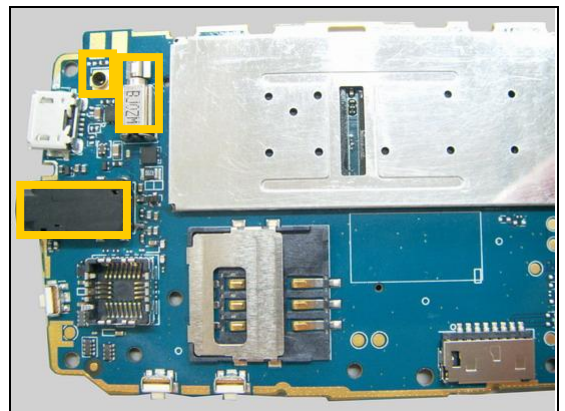
Protect the RF Connector, Side Key Switch and Card Conn Micro SD with capton tape!



10

J403

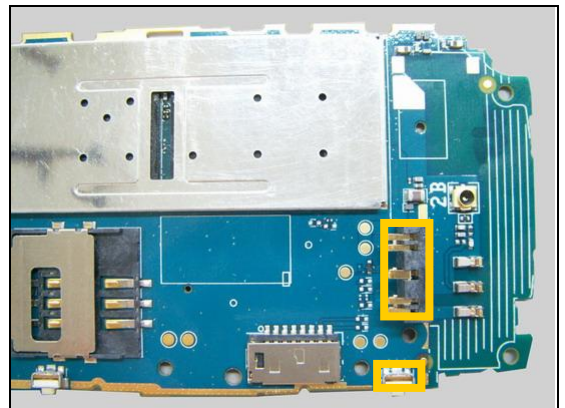
Protect the Conn Audio Jack, RF Connector and Vibrator with capton tape!



11

J404, Z902

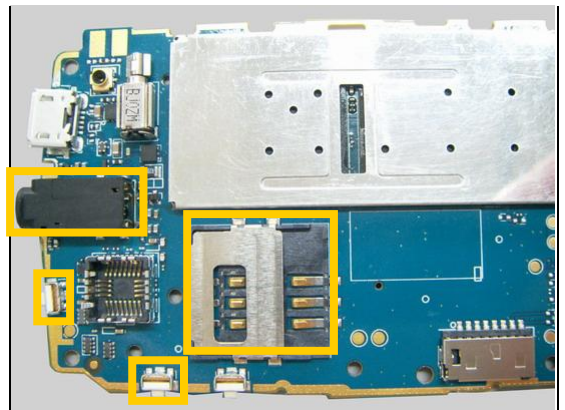
Protect the Battery Connector and Side Key Switch with capton tape!



12

J501

Protect the Conn Audio Jack, Side Key Switches and SIM Card Connector with capton tape!



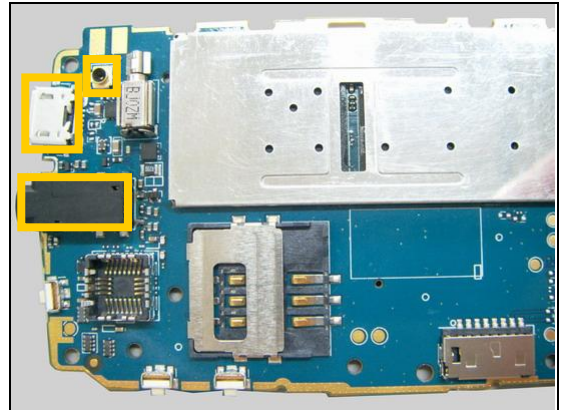


Repair Actions: Additional Repair Info

13

J605

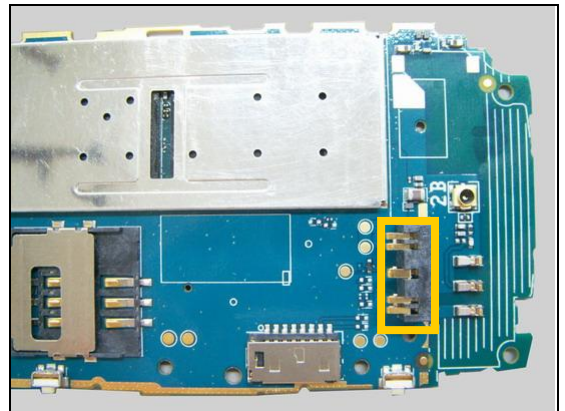
Protect the Conn Audio Jack, Micro USB Connector and RF Connector with capton tape!



14

J901

Protect the Battery Connector with capton tape!



15

RN501, RN503

Protect the Camera Socket and Side Key Switches with capton tape!



16

SW701

Protect the Camera Socket, Side Key Switch and SIM Card Connector with capton tape!



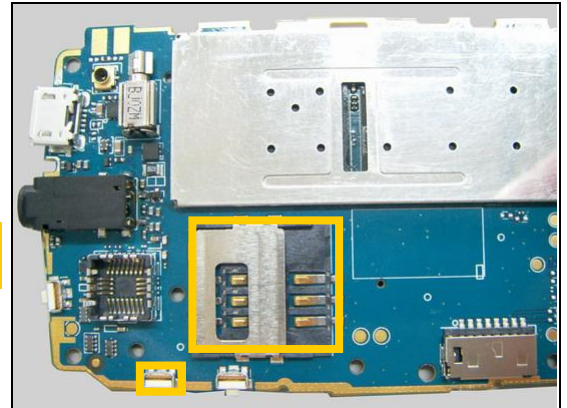


Repair Actions: Additional Repair Info

17

SW702

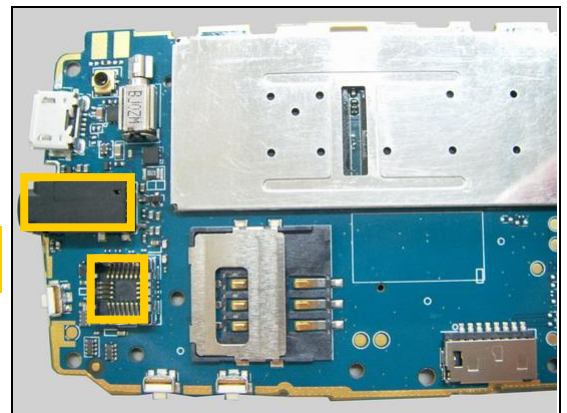
Protect the Side Key Switch and SIM Card Connector with capton tape!



18

SW704

Protect the Conn Audio Jack and Camera Socket with capton tape!





4 Revision History

Rev.	Date	Changes / Comments
1	2011-Jun-24	Initial release
2	2011-Aug-30	Change “μ” to “u”
3	2011-Oct-20	Add MSL